



ANNUAL
REPORT
FISCAL YEAR
2025

Table of Contents

Director’s Message	_____	03
Mission	_____	04
Report Highlights	_____	05
Experiential Learning	_____	06
Wellness Programs	_____	08
Research & Best Practices	_____	11
Resilient Communities	_____	12
Building Our Team	_____	16
Acknowledgements	_____	17

Message from our new Executive Director

Our focus has been creating continuity of services and fostering sustainable collaborations for this unique city/university partnership.

During my first few months at the Center, I had the honor of getting to know families, staff, and Cal State Fullerton students who make the Center exist and the inspiring resident leaders who bring so much heart to this community. As we look towards the future, I focus on implementing activities to enhance our services. I am also seeking funding opportunities to support existing and new programs centered on quality of life and collaboration. Together with the College of Health and Human Development leadership and the community, we will continue to build on a shared vision to improve the quality of life of our community.



“The vibrancy of the community continues to be reflected in our services.”

A handwritten signature in black ink that reads "Iris Aguilar".

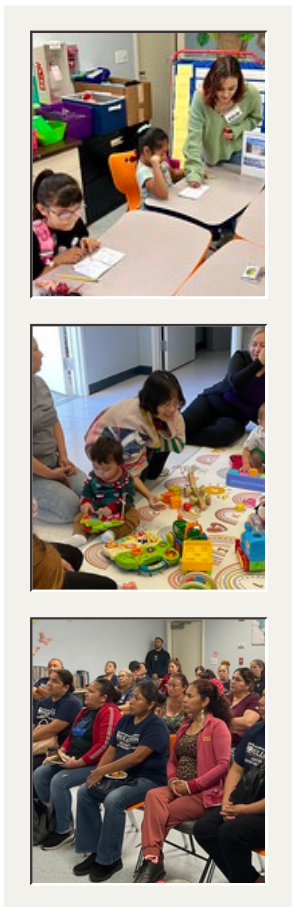
IRIS AGUILAR, DPPD

Mission

We create equal opportunity communities that are healthy, safe, and active.

The Center serves as a model university/city partnership that cultivates community, student, and faculty collaborations to drive systemic change until all communities have equitable opportunities to thrive in a healthy, safe, and active environment

Center Values



STUDENT SUCCESS

We adopt a holistic and inclusive approach through service-learning opportunities to help prepare students to address workforce demands, community needs, and social justice challenges.

FACULTY SUCCESS

We cultivate faculty working collaboratively with community residents to address the challenges communities served by the Center face through innovative research, scholarship, and creative activities.

CIVIC AND COMMUNITY ENGAGEMENT

We inspire students, faculty, and staff to be informed, responsible, and engaged community members and advocates who promote social justice and strengthen the communities we serve. Building resident capacity is central to improving community conditions; issues confronting communities can only be solved when residents are actively involved in identifying the needs and helping to make changes.

Annual Report Highlights

Fiscal Year 2024-2025



Funding Summary

\$2 MILLION State Appropriation
(through June 30, 2026)

\$10,021 Donations & Grants



Intern Workforce Impact

4,792 Hours from **53** Interns

\$192,351 Value of Volunteer Time
based on independentsector.org



Center Reach

4,769 People impacted by programs
and services

2,032 Participants attended health
and wellness events



Academic Success Program

2,192 Hours of tutoring and mentoring

184 K-12 participants supported

36 Tutors

1 IN 6 Student (tutee) identified as
neurodiverse

Student Success Through Experiential Learning

Each year, the Center for Healthy Neighborhoods (CHN) provides meaningful experiential learning opportunities for California State University, Fullerton (CSUF) students through internships, practicums, service-learning, and paid student worker roles. Throughout this report, all references to student interns or student workers refer to CSUF students who actively supported the Center’s programs and community initiatives. For simplicity, all of these roles will be referred to collectively as “interns.”

Goal 1: Foster student success by providing high impact off-campus experiential learning opportunities that enhance professional development, civic responsibility, and cultural awareness.



The **Academic Success Program (ASP)** positively impacted young learners by inspiring them to unlock their potential and build academic confidence. Interns provided one-on-one tutoring and mentorship to local youth, building meaningful connections and supporting academic and personal growth. In the Spring a pilot math tutoring initiative for teenagers in grades 6-12 received enthusiastic parent feedback. Plans are underway to expand math tutoring in the upcoming school year to reach additional participants.

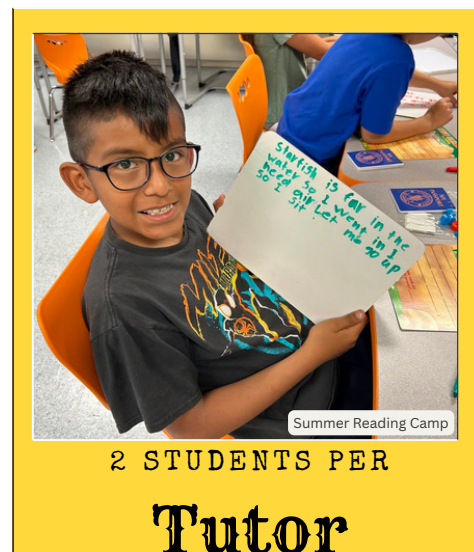
DEGREE PROGRAMS REPRESENTED BY INTERNS

- | | |
|------------------------------|-----------------|
| 10 Human Services | 7 Public Health |
| 7 Child & Adolescent Studies | 4 Math |
| 7 Psychology | 1 Sociology |

The two-week **Safari Summer Reading Camp** gave thirteen aspiring teachers hands-on training and mentorship from Hazel Croy Miller Reading Center faculty consultants, building skills in teaching, youth engagement, and peer collaboration. Twenty-seven children “traveled” through themed reading stations, collected passport stamps, enjoyed play breaks, and concluded with a family reading performance before taking home books and literacy supplies.

DEGREE PROGRAMS REPRESENTED BY INTERNS

- | |
|-------------------------------|
| 11 Child & Adolescent Studies |
| 1 Human Services |
| 1 Psychology |

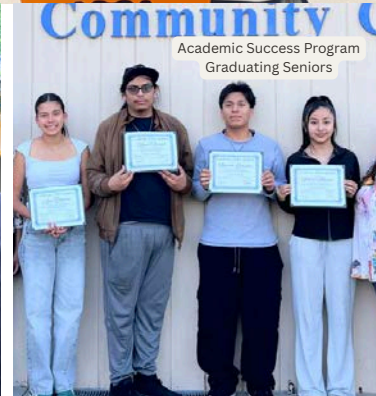


Student Success Through Experiential Learning



ASP Fall Festival created a day of fun, connection, and celebration. The event gave CSUF interns and tutors the opportunity to engage with families in a relaxed, interactive setting beyond tutoring, strengthening relationships that support student success. The event was made possible with support from the Assistance League and St. Philip Benizi, reflecting the strong partnerships that foster community and holistic well-being.

End of Semester Reflection
Each semester interns share their experiences, highlight successes, and identify areas for improvement, providing valuable insights that guide program development. These sessions strengthen the student learning experience while supporting CHN's commitment to continuous improvement.



Learning, Development, and Well-Being for Children and Families

Goal 2: Delivered impactful educational and wellness programs that enriched the lives of low-income children and families. These initiatives promoted developmental growth, lifelong learning, and overall health through collaborations with diverse community partners.

Recurring Programs



School of Nursing

Thirty-two (32) nursing students presented educational workshops throughout the year to one-hundred and thirty-five (135) Richman Park community-members on the following topics: Sleep, Yoga & Aroma Therapy, Addiction & Mental Health, Changes in Aging: Women’s Health, and Skin Cancer.



Providence St. Jude’s Move More, Eat Healthy cooking demonstrations touched one-hundred and one (101) Richman Park community members. Residents gain knowledge about make healthier culturally appropriate foods.



Move, Nourish, & Thrive engaged ninety-nine (99) children in Spring 2025 with kid-friendly cooking and active play sessions. Twenty (20) public health undergraduates designed and led age-appropriate lessons as part of a multidisciplinary course on childhood obesity, promoting healthy habits for children ages 6–12. Parents and siblings were welcome to join, making each session a fun family experience.



Baby Development, offered in collaboration with CSUF Kinesiology Dr. Do Kyeong (DK) Lee, engaged 23 families with infants and toddlers up to age two. Held monthly during each semester, the sessions focused on assessing motor development, guiding parents on milestones, and providing opportunities to socially connect with other parents. Professor Lee’s students also participated in supporting the sessions.

Learning, Development, and Well-Being for Children and Families

Short-Term Initiatives and Special Events

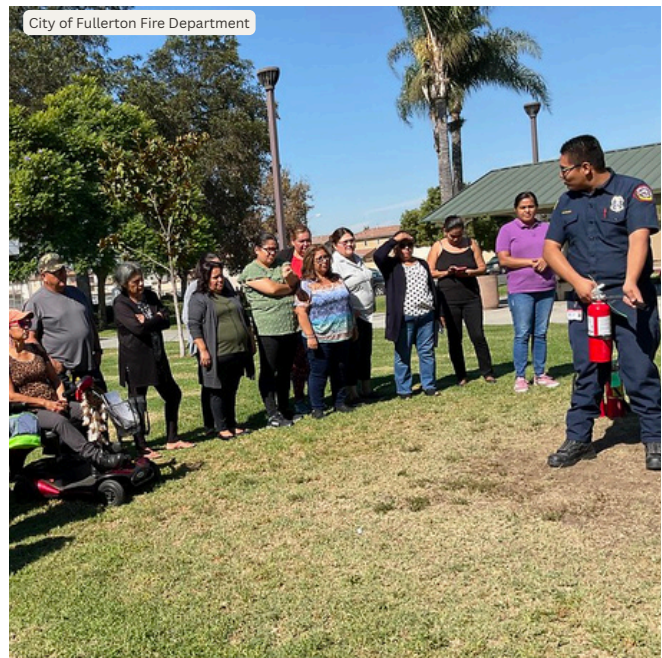
Note: This represents a selection of key activities and is not a complete list of all activities throughout the year.

Cáncer de Seno (Breast Cancer) was a psycho-educational workshop provided Providence St. Jude's Oncology Nursing Department on breast cancer awareness, risk reduction, signs and symptoms, and available resources. Nearly forty (40) women attended, gaining valuable knowledge to support their health and self-care.

Cuerpo y Cerebro Sano es Vida Sana: Consejos de las Últimas Investigaciones (Healthy Body and Brain for a Healthy Life: Tips from the Latest Research) was presented by the Alzheimer's Association to highlight the latest research on brain health. About twenty (20) residents attended and learned practical strategies to support cognitive wellness and reduce future risk of decline.



STEM Family Day brought together twenty-eight (28) participants for hands-on activities emphasizing critical thinking, problem-solving, and innovation. Children in grades 4–6 collaborated with their families to assemble STEM kits generously donated by the Young family, creating a fun and educational experience.



Listos Emergency Preparedness was a collaboration with the City of Fullerton Fire and Police Departments to host Listos, an emergency readiness workshop for community members. This statewide program taught twenty (20) residents how to prepare for disasters like earthquakes, fires, and power outages, create family emergency plans, and assemble go-bags to keep households safe.

Learning, Development, and Well-Being for Children and Families

2025 Community Health Fair



On Saturday, May 3, 2025, CHN hosted its annual Community Health Fair, welcoming more than 200 participants to a day of health, wellness, and community connection. Nineteen (19) local community-based organizations and businesses provided valuable resources on topics including cancer awareness, family caregiving, public health insurance programs, and Fullerton School District services. Attendees also received free health screenings for blood pressure, glucose, and BMI.



The event offered a family-friendly environment where residents engaged with City of Fullerton first responders. The Fire Department provided breakfast, and the Police Department served lunch, making the day even more welcoming.



“Muy buena y muchas gracias.”

“Está muy bien; es importante que la gente obtenga información.”

This successful event strengthened community connections and will help guide CHN’s future health programming.

Collaborative Research and Best-Practice Initiatives

Goal 3: Support faculty and students working with the community to conduct community-based research and best-practice projects that address the Center's mission.



FunDoRoo, a partnership with CSUF's Center for Successful Aging, engaged twenty-two children (22) during the Fall semester. Children ages 7–14 were assessed on motor skills and participated in structured activities designed to build strength and support healthy development. The program also evaluated the feasibility of offering FunDoRoo in a group setting within the community.

Evaluating the Academic Success Program being led by Dr. Guadalupe Díaz Lara examines the Center's ASP program through review of available data to explore potential links between the program's tutoring and mentoring activities and children's academic growth and well-being. Findings will help CHN identify areas for future program improvement.

Community Leadership in Health Initiatives: Analyzing the Role of Local Leaders and the Center for Healthy Neighborhoods, a mixed-methods research project led by CSUF student Ivy Gonzalez under the supervision of Dr. Lilia Espinoza, builds on years of collaboration with the local community. This study will examine the resident leaders program to help refine strategies to engage and sustain an active network of community leaders and strengthen overall community capacity.

PATH Academy led by Dr. Pimbucha (Pim) Rusmevichientong as a summer program engaged twenty-one (21) PATH Research Scholars with six (6) resident leaders to explore community needs and priorities. The experience strengthened students' applied research skills and deepened their understanding of effective community engagement.



Pandemic Voices of the Richman Neighborhood led by Dr. Natalie M. Fousekis, Director of the Lawrence de Graaf Center for Oral and Public History invited residents to share their experiences during the COVID-19 pandemic. Participants reflected on its impact on their daily lives and described how they partnered with CHN staff to help secure essential food and basic resources for the community.

Building Healthier and More Resilient Communities

Goal 4: CHN helps community residents thrive by influencing public policy, promoting social justice, fostering healthy and safe environments, and building local capacity to create positive change.

Empowering Community Members

Community Meetings to foster collaboration, share resources, and strengthen community engagement. These meetings bring together residents, local professionals, government staff, and elected officials to discuss neighborhood priorities and foster positive change.



Eight (8) meetings were hosted, with a total attendance of 336 participants and peak attendance reaching over 100 in a single meeting. Each meeting featured topics driven by community interest and local priorities, such as:

- Affordable housing updates by the City of Fullerton Housing Department
- The City of Fullerton Chief of Police and Fullerton School District Superintendent regarding immigration enforcement
- Human trafficking & sexual abuse prevention
- Healthcare Access and services led by CalOptima
- Regular updates from City of Fullerton City Manager and District 4 Councilman

These gatherings foster collaboration, share resources, and give residents a voice in addressing the social determinants of health that affect their community.

Building Healthier and More Resilient Communities

Empowering Residents to Lead Positive Change



The **Resident Leaders Program** equips local residents with the skills and confidence to identify community needs, advocate for solutions, and lead neighborhood projects. Participants engage in training, hands-on projects, and the Center’s community meetings to strengthen community voice and create lasting change.

Mole & Pozole Appreciation Event

Resident Leaders hosted CHN’s Mole & Pozole Appreciation Event, serving over 200 City of Fullerton employees to foster engagement and strengthen community partnerships. By sharing food with staff from Police, Fire, and other City departments, Resident Leaders advanced their role as community advocates, reinforcing positive relationships and collaboration. CHN plans to host this event every two years to continue nurturing trust and connection between the community and the City of Fullerton.



Household essentials and nutritious food, made possible by the continued generosity of CSUF Health and Human Development faculty, staff, and their friends, are helping families meet critical needs and restore hope during challenging times.

Building Partnerships and Advancing Sustainability

Goal 5: Partnership creation with community organizations and strategically seeking external funding to advance programs aligned with the Center’s mission. Collaborating with local agencies and businesses to expand reach, support for more families, and ensure long-term sustainability.

Salud y Bienestar Program (Health and Wellness) funded by Providence St. Jude Medical Center helped expand mental health resources and support to the community. Consultants were hired to oversee the emPODERar pilot, lead Zumba and yoga classes.

emPODERar was developed to offer mental health support group sessions on family dynamics, parenting, self-care, grief, and relationships under the supervision of a Licensed Marriage and Family Therapist.



213

unduplicated residents received case management, information, and referrals addressing social determinants of health such as housing, food access, medical insurance, and mental health support.



73

residents attended psychoeducational sessions on the impact of nutrition on mental health.



1,351

attended Zumba classes (duplicated attendance).



169

participants in Yoga classes that started in the Spring offered once per week traditional and chair yoga (duplicated attendance).

Building Partnerships and Advancing Sustainability

Richman Outdoor Grant Partnership

Through a partnership with City of Fullerton Parks & Recreation, CHN manages outreach and enrollment for free field trips exclusively for our program families. Some activities use CHN's facility as a meeting point, connecting youth and caregivers to outdoor wellness and environmental learning experiences in local natural spaces. A total of 481 participants joined, with many families attending multiple excursions.



CSUF Giving Campaigns

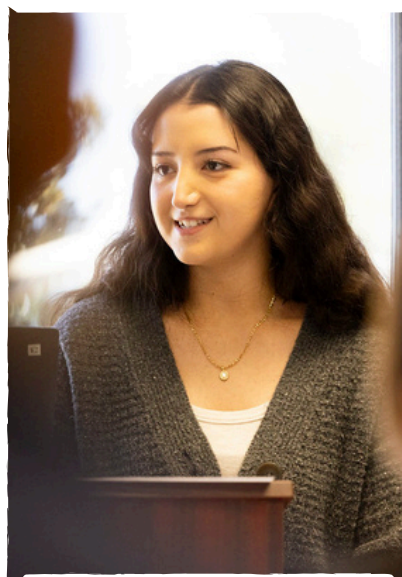
CHN participated in CSUF's Fall Crowdfunding and Spring Titans Give Day, engaging students, faculty, alumni, and community supporters to amplify awareness and raise funds. These university-wide campaigns enhanced CHN's visibility and opened pathways for fundraising, community outreach, and future donor engagement opportunities.

CSUF Resource Development Committee Luncheon

At a fall luncheon hosted by the CSUF Philanthropic Foundation Resource Development Committee, CHN shared program outcomes with donors and community partners. Student interns Safa Mustafa and Jayleen Chao offered heartfelt testimonials about their hands-on experiences, while Miguel Rangel, a graduating senior and participant since the Academic Success Program's inception in 2016, delivered an inspiring account of how the program shaped his growth and personal goals.



Safa Mustafa
Major: Bachelor's in Public Health



Jayleen Chao
Major: Bachelor's in
Child and Adolescent Studies



Miguel Rangel
Fullerton High School Senior

Building Our Team

As part of CHN's commitment to sustainability and program expansion, the team grew to five staff members this year, adding roles in program coordination and community engagement. These new positions enhance CHN's ability to deliver high-impact services, strengthen partnerships, and support student success.



Sergio Calderón, MPH
Assistant Director

Oversees daily Center operations, program planning, and compliance, supporting staff, interns, and community engagement efforts.



Egleth Nuncci Padilla, BA
Senior Community & Programs Liaison

Recently promoted to lead community outreach and resident leader initiatives, supervising the outreach team to strengthen neighborhood engagement.



Antonio Grande, BA
Coordinator

Manages front-line program coordination, client intake, referrals, and administrative support for Center programs and events.



Nancy Rojas, BS
Community Outreach Worker

Builds trusted relationships with residents, providing direct outreach, service navigation, and support for community events.

Acknowledgements



Our very own Egleth Nuncci was among the inspiring women recognized by the Woman's Club of Fullerton for her commitment to improving the lives of local residents.



This annual report was prepared by Dr. Iris Aguilar, Executive Director, with support from the CHN team—Sergio Calderón, Egleth Nuncci, and Antonio Grande. Their collaboration and dedication ensured the report accurately reflects CHN's impact over the past year.



With gratitude to our families, resident leaders, community partners, student interns, and donors who make CHN's mission possible.



Physical Address

CSUF Center for Healthy Neighborhoods
320 W Elm Avenue
Fullerton, CA 92832
Office: (714) 441-3401
Text/WhatsApp: (714) 714-1416
healthyneighborhoods@fullerton.edu
<https://healthyneighborhoods.fullerton.edu>



CSUF | **Center for Healthy Neighborhoods**
COLLEGE OF HEALTH AND HUMAN DEVELOPMENT

ANNUAL REPORT 2025